

71st Tengu Salmon Fun Derby General Rules and Regulations

1. The Name

The Name of the event is called “Tengu Salmon Fun Derby”.

2. Sponsorship

The Derby is sponsored and operated by the Tengu Club of Seattle, a non-profit organization of the State of Washington.

3. Membership

- a) Membership is open to anyone. (Article II Section 2.1 of the By-laws)
- b) It is renewable annually. The membership status begins on the first day of the annual derby upon full payment of the due and ends on the day before the following year’s first day of the derby.
- c) Membership card is issued. The member is expected to carry the card whenever he/she fishes in the derby. It is every member’s responsibility to provide the most current and correct address and the phone number so that the club can communicate with the member on the club business.
- d) Membership is not transferable. (Article II Section a.) Those who are 12 years old and under are admitted as the junior members with the same requirements and privilege as the regular members.

4. Membership Fee

Annual membership fee is determined by the board of directors prior to each season based on the recommendation of the Operations and Rules Committees meeting(s). (Article III Section 3.1.)

For the **2016 season**, which covers a one-year period commencing on **Nov. 6, 2016**, membership fee is \$15.00 and \$5.00 for 12 years old and under.

5. Derby Dates

The Board of Directors at the annual board meeting determines the number of days and specific dates.

The **2016 season’s** dates are: **Nov 6, 13, 20, 27, Dec 4, 11, 18, 2016.**

6. Schedule Changes

The dates scheduled initially may be altered due to weather and are subject to regulatory change dependent upon Department of Fisheries decisions for Region 10. The directors may decide to cancel, postpone or terminate any derby day based on the recommendation of the Operations Committee, which obtains inputs from the general members and the boathouse operator.

7. Derby Time

The starting time for any given derby day is decided by the boathouse operator and the Operations Committee members. At the time of registering for the day, members are notified of a tentative starting time. Approximately 30 minutes before starting, firmer time will be set. It is every member’s responsibility to be knowledgeable of the correct starting time. **No one is allowed to leave the immediate vicinity of the Seacrest dock/pier area until a signal is given for everyone to start fishing.** There shall be no exceptions. The ending time is 11:00 AM of the same day.

The ending time may be delayed if the start is delayed for some reason. If the ending time is to be delayed, it must be decided **before** the derby is started for the day. The official clock is the boathouse clock so designated unless the Operations Committee members decide to use another time device. It is every member’s responsibility to know which time device is being used for the day. The derby chairman or his designee will signal the start and the ending for each day.

8. Daily Registration

- a) Every member must register by entering his/her name and the membership number in the official Board, (All Species or Blackmouth on **each day of fishing**. Even though one is a paid member and carries the card, the fish caught that day shall not be recognized if he/she fails to register *before* going out to fish.
- b) Aside from registration the members may be required to obtain starting ticket stubs and follow the instruction.
- c) Any side pot is optional.

9. Fishing Area

All Fish must be caught within the prescribed boundaries defined by the Tengu Club. Each session has different boundaries. The Tengu Club map in Seacrest Boathouse shows the general area.

10. Fishing Gear

Lures - All fish must be caught on rod and reel with a sinker and herring setup only. No artificial lures or attachments such as dodgers, diving planes, spoons, plastic squids and other similar items shall be permitted.

- a) Downriggers - Not permitted. To avoid confusion the boats with downrigger setups are advised to detach the device for the days of the derby.
- c) Sinkers - Banana-shaped sinkers of various colors are permitted. Flash-bar attachment to the sliding sinker is permitted as long as it is used in conjunction with the sinker.
- d) Hooks - Colored hooks are permitted. No barbs.
- e) Rod - Only one rod should be in use for each member.

11. Fish

Blackmouth salmon of legal size caught during the Derby (*Nov 6, 13, 20, 27, Dec 4, 11, 18, 2016*) will be registered on the official board and thus may be eligible for Blackmouth derby prizes. Other species of salmon are treated separately.

12. Registering Fish (*No official weighing of fish will be done before 10:30 AM or 30 minutes before closing time.*)

- a) The fish caught must **be brought in by boat** and **must be accompanied by the person** who caught the fish. Fish brought to the weighing station by land shall be disqualified.
- b) The fish presented for weighing must not have anything attached or inserted. This includes hooks and leaders. Disqualification might apply.
- c) A weighing judge must be present and preside the weighing and registering the fish. The Derby Chairperson may designate some appropriate person as the weighing judge if the assigned judge is not available. All board members act as the judges.
- d) Weighing and registering must not be done by the person who caught the fish. There shall be no exception. The person must wait until a judge is available. Let the judge conduct the weighing without any interference.
- e) Every salmon must be measured by **length of the fish**. No exceptions. Species of fish must be determined by the judges. Remember all the board members are the judges.
- f) Using the scale belonging to Tengu Club, the **weighing judge** determines the weight of the fish. Be consistent as for the "0" point of the scale.
- g) Determining the weight is done by the judge (after the length is measured) estimating to the nearest half ounce but **always rounding down**. For instance, if the scale needle is up to but not on the line of 5 lb 10, the fish's weight should be 5 lb 9.5 oz.
- h) The judge shall enter the weight of the fish on the official board. The judge may also enter the length of the fish.
- i) The fisherperson must provide the **membership card** and the matching stub of the starting ticket (if required) to the weighing judge at the time of weighing.

13. Infractions and Penalties

It is all members' responsibility to know all the rules and regulations of the state of Washington as well as those of the Tengu Club and must observe and follow them. It is the members' duty to report any and all infractions to the judges which in turn shall report to the board. Penalties for infractions may include reprimand, disqualification, and others. The board's decision is final.

14. Liability

All participants of the Tengu Blackmouth Salmon Fun Derby agree to follow and obey all the rules set by the Tengu Club and the State of Washington. They must agree to participate in this derby at their own risk. The Tengu Club of Seattle, the officials, the directors and the judges for any given day and the boathouse assumes no responsibility for personal injury, loss of life, and loss or damage to personal property incurred during the derby.

Attachment to the Tengu Derby Rules/Regulations

West Point Area

The Tengu Blackmouth Salmon Fun Derby has moved its northerly boundary to include the West Point area. (Amended: 10/4/15)

The basic boundary line is Alki Point (the extreme tip of the beach at the Alki Point Lighthouse) to West Point (the green can).

The south boundary of the Alki Point area starts at the point on the beach 1000 yards (0.57 miles or roughly 0.5 nautical mile) from the extreme tip of the Alki Point Lighthouse beach exposed at the mean tide level (the origin point) and extends circularly 1000 yards (0.5 nautical mile) until it comes to the line connecting the tip of Alki Point and the green can at West Point. Stay within the boundary while fishing in the Tengu Derby. If you are south of the Harbor West Apartments or Cannery Condo, you are out of bounds. Remember to stay within 1000 yards of the origin point at all times.

When you go from Alki Point to West Point, it is advisable to take a straight course between the tip of Alki Point and the green can at West Point so you would be aware of the boundary line.

The northern boundary of The West Point area is the point on the beach 1000 yards (roughly 0.5 nautical miles) from the green can on the Point. Thus, the boundary at the West Point area extends from the point on the beach circularly 1000 yards until it meets the line connecting Alki Point and West Point. When fishing the north side of West Point, be sure to stay within the 1000-yard boundary from the green can on the Point.

Note: We may make some minor adjustments regarding the newly defined boundaries after some initial fishery. The Operations and the Rules Committees will make the final decision based on input from the members. Please note that our boundaries at West Point and Alki Point are different from the ones defined by the Washington State Department of Fish and Wildlife. As clearly stated in the rules and regulations of the derby a disqualification may result if you are found to be fishing for salmon outside the boundaries defined by the club. Also, it is every member's responsibility to report any infraction of the rules whenever it occurs including his/her own. Declare yourself ineligible for the day before taking off to the area outside the boundaries for salmon fishing. Caution should be used in fishing the West Point area. **KEEP A WEATHER EYE!!** The area is exposed to the prevailing southwest winds. It can, at times, become so rough that boats have sought shelter in the Elliott Bay Marina. Rough water will also slow your return to Seacrest Boathouse. Tip: If you see a dark streak on the water horizon, winds are increasing from that direction! Only you and you alone are responsible for your actions while fishing in the derby.

Nautical Miles

Yards

1000 0 1000 2000 3000 4000 5000

SOUNDINGS IN I

(FATHOMS AND FEET TO 1'

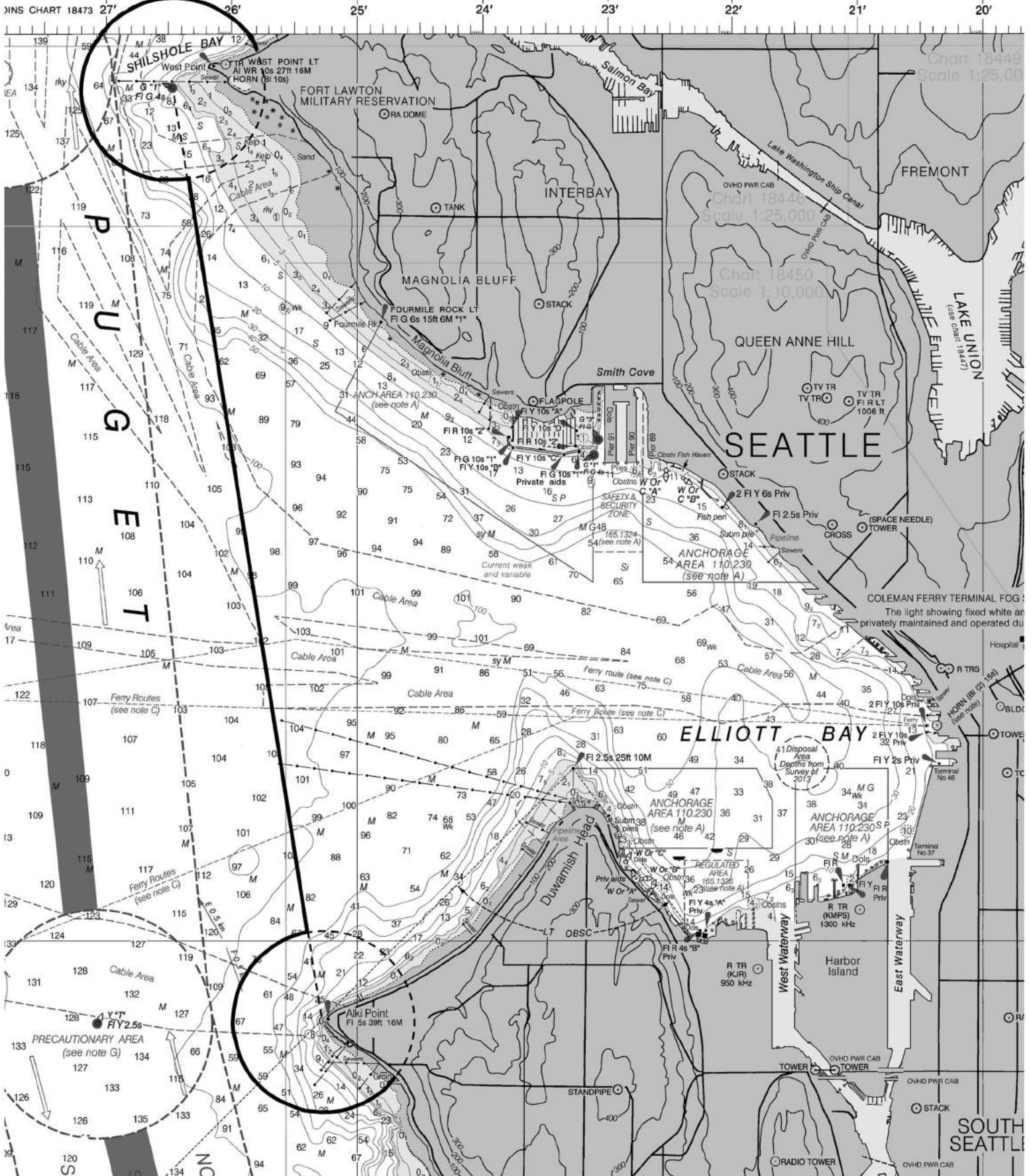


Chart 18449
Scale 1:25,000

Chart 18446
Scale 1:25,000

Chart 18450
Scale 1:10,000

COLEMAN FERRY TERMINAL FOG :
The light showing fixed white at
privately maintained and operated du

ANCHORAGE AREA 110,230
(see note A)

ANCHORAGE AREA 110,230 S.P.
(see note A)

